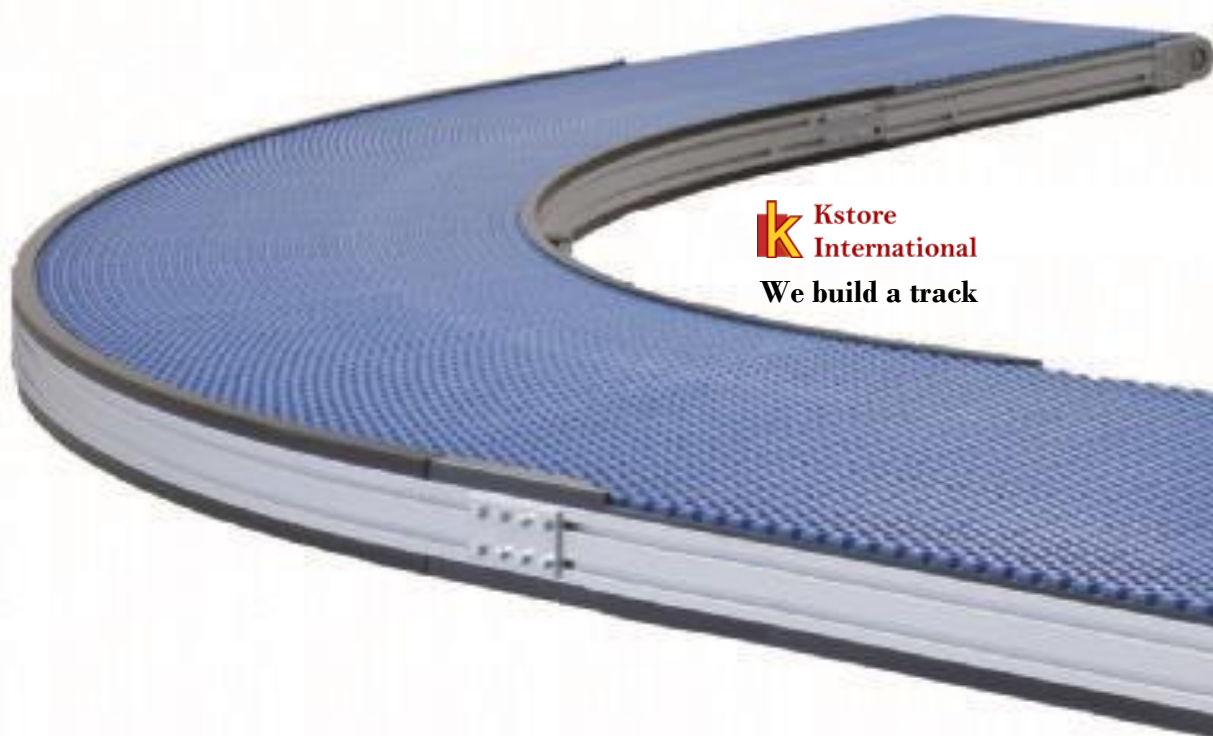


Product Guide



k Kstore
International
We build a track

It addresses important aspects of today's packing processes: easy to clean, smooth handling of products, safe for operators, robust design, long life, and easy to maintain with a low cost of ownership.

The modular and standardized design ensures fast set up, and facilitates rapid future extensions and changes. It is suitable for conveying both bulk goods and goods sold by the piece. It is economical; its operation is reliable, does not need too much maintenance and can easily be joined to any kind of conveyance process .



CONSTRUCTION

Plastic modular belts are assembled in a bricklaid pattern for lateral strength, and this feature Allows the construction of virtually any width and length.

MATERIALS

Each belt style is available in food approved materials to meet a wide range of application requirements, operating temperatures and chemical resistance.

ACCESSORIES

offers a wide range of modular belt accessories like Cleat, side guards

INSTALLATION

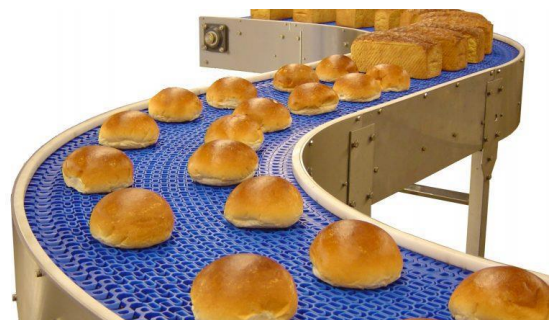
Because of the modular design and easy rod retention, belts can be installed within minutes without using complicated tools or fasteners.

IMPROVED SANITATION

the hole on module which allow to flow water through hole, which improved sanitation

EASE OF MAINTENANCE

Require less time to replace damaged module. which minimize the time required to replace complete belt



NT-12mm



Description

- **PITCH-12.7mm**
- **OPEN AREA-0%**
- **APPLICATION-Automotive industry,bakeries,food processing,fruits**

BELT DATA	PP	PE	POM
1)NOMINAL TENSILE STRENGTH(N/M)	11000	6000	16000
2)TEMP RANGE°C	5 to 105	-70 to 65	-40 to 200
3)BELT WEIGHT(Kg/m)	5.8	6.2	8.7

NT-12mm

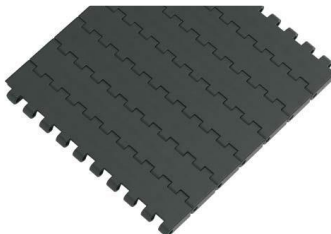


Description

- **PITCH-12.7mm**
- **OPEN AREA-18%**
- **APPLICATION-Bakeries,breweries,Fish,Poultry,packaging**

BELT DATA	PP	PE	POM
1)NOMINAL TENSILE STRENGTH(N/M)	11000	7000	16000
2)TEMP RANGE°C	5 to 105	-70 to 65	-40 to 200
3)BELT WEIGHT(Kg/m)	5.4	5.7	7.8

NT-25mm



Description

- **PITCH-25.4mm**
- **OPEN AREA-0%**
- **APPLICATION- Draining processes,Food processing, Incline transport,**

BELT DATA	PP	PBT	POM
1)NOMINAL TENSILE STRENGTH(N/M)	13200	20100	16900
2)TEMP RANGE°C	5 to 105	-40 to 93	-40 to 93
3)BELT WEIGHT(Kg/m)	5.3	5.3	8.1

NT-25mm(Anti-skid)

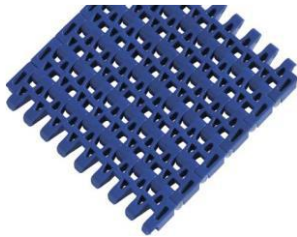


Description

- **PITCH-25.4mm**
- **OPEN AREA-0%**
- **APPLICATION- Breweries,Food processing,manufacturing Plant**

BELT DATA	PP	PA	POM
1)NOMINAL TENSILE STRENGTH(N/M)	16200	-	22900
2)TEMP RANGE°C	5 to 105	--	-40 to 90
3)BELT WEIGHT(Kg/m)	5.55	-	8.1

NT-25mm

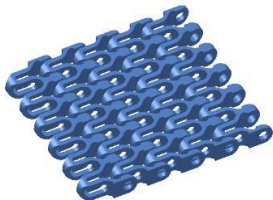


Description

- **PITCH-25.4mm**
- **OPEN AREA-35%**
- **APPLICATION- bottles, Packing, Pharmaceutical**

BELT DATA	PP	PE	POM
1)NOMINAL TENSILE STRENGTH(N/M)	14000	8000	24700
2)TEMP RANGE°C	5 to 105	-70 to 65	-40 to 93
3)BELT WEIGHT(Kg/m)	4.6	5.1	7.1

NT-30mm(Radius)



Description

- **PITCH-30mm**
- **OPEN AREA-35%**
- **APPLICATION-Breweries,Food processing,manufacturing Plant**

BELT DATA	PP	PA	POM
1)NOMINAL TENSILE STRENGTH(N/M)	19000	25000	26000
2)TEMP RANGE°C	5 to 93	-46 to 130	-40 to 200
3)BELT WEIGHT(Kg/m)	4.7	4.7	7.0

NT-38mm(Radius flush grid)



Description

- **PITCH-38mm**
- **OPEN AREA-31%**
- **APPLICATION- Automotive, Bakeries, Manufacturing of plastic**

BELT DATA	PP	PA	POM
1)NOMINAL TENSILE STRENGTH(N/M)	23000	20424	32000
2)TEMP RANGE°C	5 to 105	-70 to 62	-40 to 93
3)BELT WEIGHT(Kg/m2)	8	7.1	11.8

NT-38mm(straight)



Description

- **PITCH-38mm**
- **OPEN AREA-75%**
- **APPLICATION- bottles, Packing, Pharmaceutical**

BELT DATA	PP	PE	POM
1)NOMINAL TENSILE STRENGTH(N/M)	14593	11675	21890
2)TEMP RANGE°C	5 to 99	-70 to 65	5 to 93
3)BELT WEIGHT(Kg/m)	5.4	5.6	7.8

NT-38mm(Flat Top)

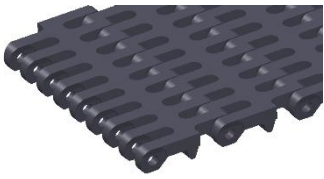


Description

- **PITCH-38 mm**
- **OPEN AREA-11%**
- **APPLICATION- Canning, Heavy load/duty, Glass manufacturing**

BELT DATA	PP	PE	POM
1)NOMINAL TENSILE STRENGTH(N/M)	26262	21010	22420
2)TEMP RANGE°C	5 to 105	-70 to 65	5 to 91
3)BELT WEIGHT(Kg/m)	6.8	7.3	8.1

FT-50mm(Flat)

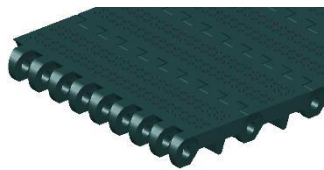


Description

- **PITCH-50.8mm**
- **OPEN AREA-40%**
- **APPLICATION- Automotive, Bakeries, Car wash**

BELT DATA	PP	PA	POM
1)NOMINAL TENSILE STRENGTH(N/M)	18000	10000	25000
2)TEMP RANGE°C	40 to 193	-70 to 62	-40 to 85
3)BELT WEIGHT(Kg/m ²)	8.9	9	11.2

FT-50mm(Hole)

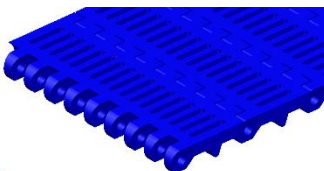


Description

- **PITCH-50.8mm**
- **OPEN AREA-19%**
- **APPLICATION- Dairies, Fish processing, Food processing,**

BELT DATA	PP	PE	POM
1)NOMINAL TENSILE STRENGTH(N/M)	22648	20430	29454
2)TEMP RANGE°C	5 to 101	-70to 65	-40 to 93
3)BELT WEIGHT(Kg/m)	8.1	8.8	12.7

FT-50mm(I-Slot)

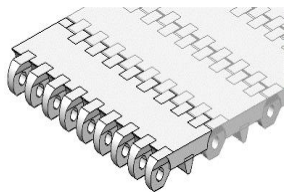


Description

- **PITCH-50.8 mm**
- **OPEN AREA-27%**
- **APPLICATION- Vegetable,Ski-industry,**

BELT DATA	PP	PE	POM
1)NOMINAL TENSILE STRENGTH(N/M)	17500	9500	16500
2)TEMP RANGE°C	5 to 100	-70 to 67	-40 to 97
3)BELT WEIGHT(Kg/m)	7.9	8.0	11.2

FT-50mm(Flat)

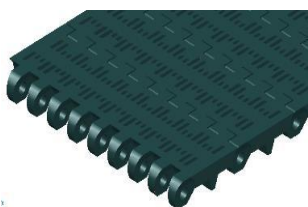


Description

- **PITCH-50.8mm**
- **OPEN AREA-00%**
- **APPLICATION- Accumulation tables, Deboning lines, Deheading lines**
- **ACCESSORIES-Flight side guard,**

BELT DATA	PP	PE	POM
1)NOMINAL TENSILE STRENGTH(N/M)	18000	10000	25000
2)TEMP RANGE°C	40 to 220	-70 to 65	-40 to 93
3)BELT WEIGHT(Kg/m ²)	9	9.4	13.5

FT-50mm(I-Slot)

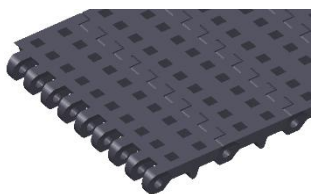


Description

- **PITCH-50.8mm**
- **OPEN AREA-21%(2mm)**
- **APPLICATION- Draining processes, Fish processing, General transport**
- **ACCESSORIES-Flight side guard,**

BELT DATA	PP	PE	POM
1)NOMINAL TENSILE STRENGTH(N/M)	18000	10000	18000
2)TEMP RANGE°C	5 to 105	-70 to 65	-40 to 93
3)BELT WEIGHT(Kg/m)	7.8	8.3	12

FT-50mm(Square-hole)

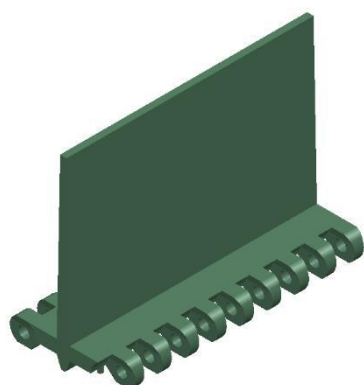


Description

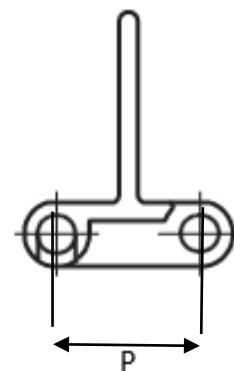
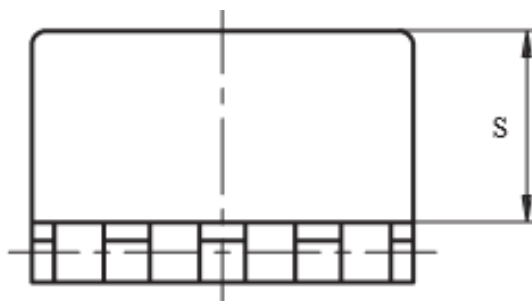
- **PITCH-50.8 mm**
- **OPEN AREA-16%**
- **APPLICATION- Inspection tables, Packaging conveyors,Poultry**
- **ACCESSORIES-Flights, Side guard**

BELT DATA	PP	PE	POM
1)NOMINAL TENSILE STRENGTH(N/M)	22000	21400	24500
2)TEMP RANGE°C	5 to 100	-70to 65	-40 to 93
3)BELT WEIGHT(Kg/m)	8.4	9.0	13

Accessories

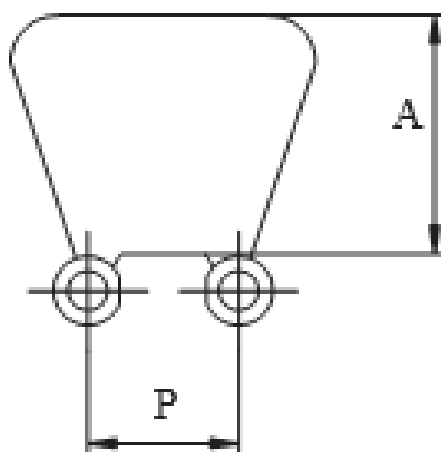


Cleat (Product Support)



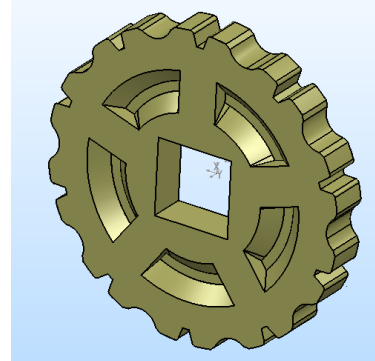
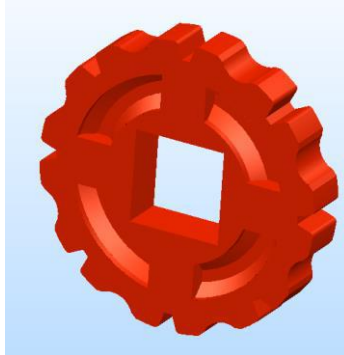
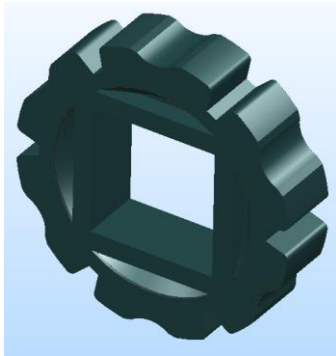
Pitch(mm)	25			38			50		
Height(S)(mm)	25	50	75	50	75	100	50	75	100

Side Wall



Pitch(mm)	25			38			50		
Height(A)(mm)	25	50	75	50	75	100	50	75	100

Sprocket Data



<u>Standard sprocket</u>		
No. of Teeth	Pitch Dia(mm)	Bore Dia(mm)
10	41.8	ø10
19	78.5	ø 19.1
		sq 25.4
		sq 38.1
		sq 40
28	115	ø 19.1
		sq 25.4
		sq 38.1
		sq 40
38	156.4	ø 19.1
		sq 25.4
		sq 38.1
		sq 40

We produce 30 types of conveyor belts with different size and design

We produce every conveyor belt based on individual claim and installment position according to our client's request.

Flex-track belting also delivered mold and dies to industries around the globe,

We now branched into manufacturing of conveyor components,

We are committed to deliver affordable conveyor belts , chains and roller, If you have a special requirement, we shall try our best delvers the same, clients trust us for any kind of belts, Simply let us know the needs, we can help you choose the right product,



Kstore international

www.kstoreinternational.com

sales@kstoreinternational.com